



ROV Maintenance LOG



Topic: CCU 主機更新後 ROV 無法連線問題修正

Date: 2024.06.03

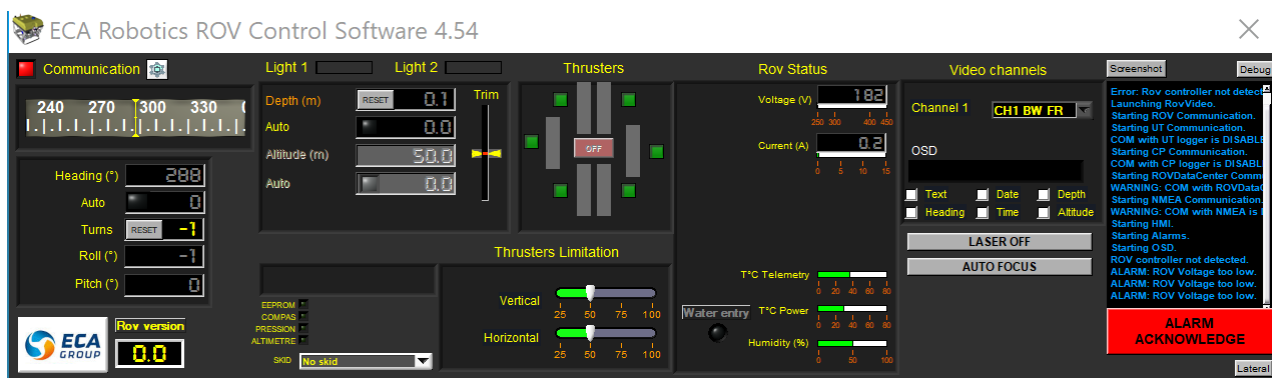
Location: IONTU B1 ROV Room

Personnel: 劉家宏

ROV: ECA H800

Description

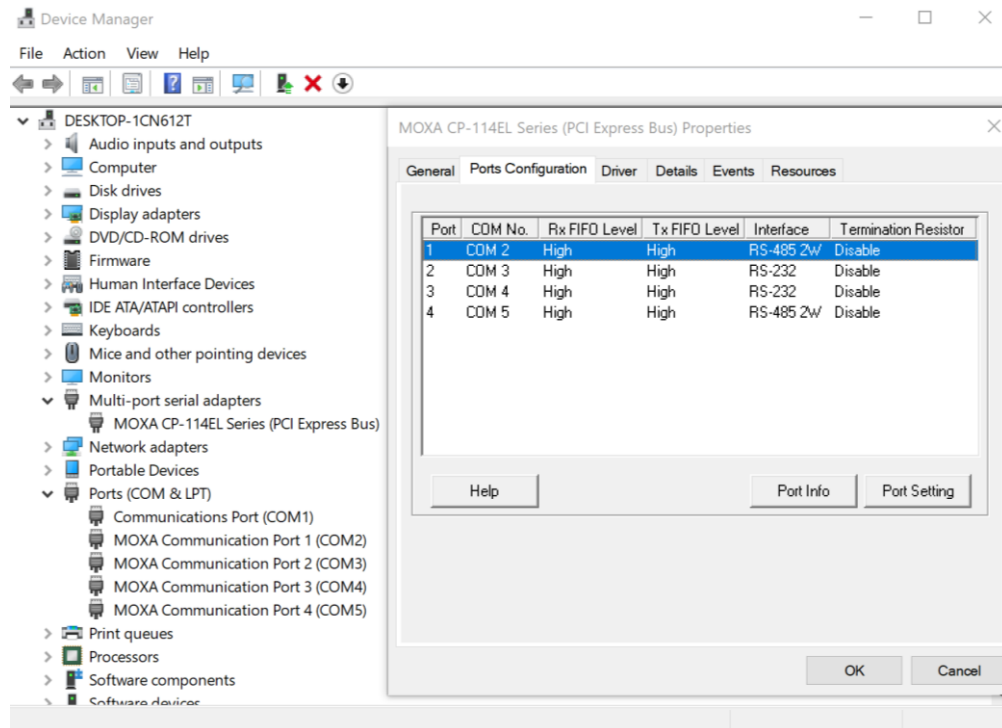
CCU 的電腦主機在更新後因為 Moxa interface board 的設定被還原導致 ROV 無法和 CCU 電腦連線 (圖一)，需要重新進入 Device Manager 設定解決連線問題。



圖一、ROV 的 Human Machine Interface (HMI)連線狀態一直顯示紅燈。

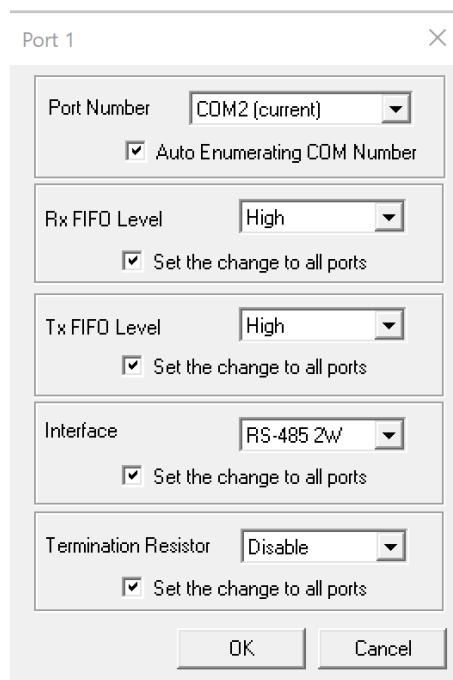
Operation

1. 搜尋並進入 Device Manager
2. 點選 Multi-port serial adapters > MOXA CP-114EL Series (PCI Express Bus)
3. 檢查四個 COM 的設定是否與圖二相同，Port 1 的設定為 COM2，而 COM2 與 COM5 的 Interface 為 RS-485 2W，COM3 及 COM4 則是 RS-232



圖二、四個 COM 的設定畫面。

4. 如果有出入，點兩下滑鼠以設定 Port 的參數(圖三)，設定單一 Port 時記得取消 Set the change to all Ports 的選項。



圖三、Port 的設定畫面。

Reference

Exail 技師 François 的 email 指示(圖四)。

Check in the COM ports what are the ports numbers for MOXA interface board.
There are 4 com ports, you will see the port number (physical number written on the plugs), and the com port nuber (logical port number.
Check that the PORT 1 is properly connected on the ROV DB9 connector on the rack inside the CCU.
Check that in the device manager, PORT1 physical is set as COM2
Then, in the device manager, there is a menu to acces to the MOXA board settings, check that PORT1 is RS485 2 wires.
Be careful, if you make some modification, the setting may be duplicated for all the serial ports, so uncheck the option!!!!

圖四、2024.03.18 的 e-mail 截圖。